

1 - Set of package

- MacR6 N
- 6 Torx T10 M12 screws
- 2 plastic tack rivets
- H-type silicone gel in syringe
- Watermeter adapter kit

2 - Necessary accessories

- Torx T10 screwdriver



- Smartphone or tablet with NFC support
- Data Loggers Configurator NFC application
– QR code redirects to Google Play store



- MicroSIM card



3 - SIM card assembly and slot sealing

1. Dismantle the front cover (fig. 3.1).
2. Dismantle the SIM card cap, take off the SIM holder (fig. 3.2).
3. Install the SIM card according to fig. 3.3. Insert the SIM holder inside the socket.
4. Using the syringe seal the surface of the SIM holder and the cap inside – fig. 3.4 & 3.5.
5. Put the cap on the socket. Tighten the front cover using included Torx screws (fig. 3.6.).

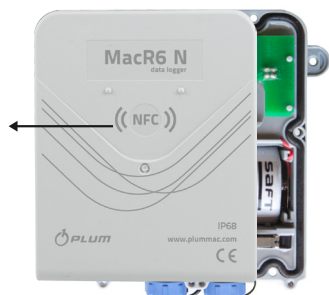


Fig. 3.1.

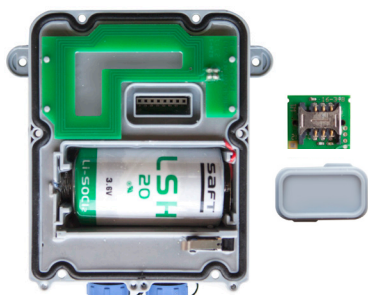


Fig. 3.2.

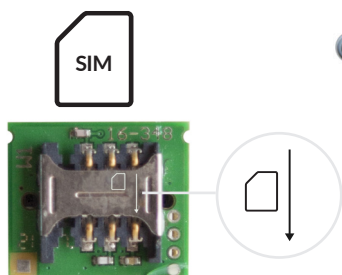


Fig. 3.3.

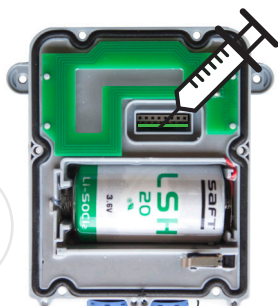


Fig. 3.4.

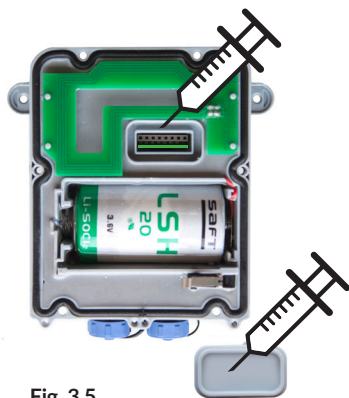


Fig. 3.5.

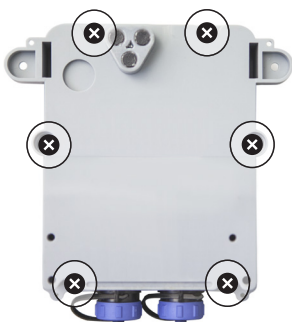


Fig. 3.6.

6. Using the syringe put the gel on the front of the head of coils and spread it carefully on the whole surface using finger or soft tool – fig. 3.7 & 3.8.



Fig. 3.7

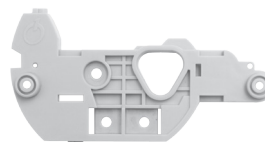


Fig. 3.8.

4 - Watermeter assembly

1. Choose the adapter dedicated to the watermeter.
2. Install the adapter using included screws.
3. Instal the MacR6 N on the adapter using tack rivets (fig. 4.3.).

• ITRON



ITRON adapter is also designed as the pipe holder using cable ties – fig. 4.1 or wall holder using pegs – fig. 4.2.

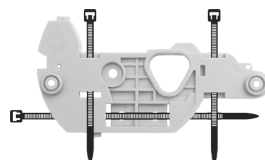


Fig. 4.1.

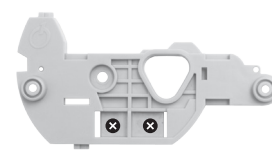
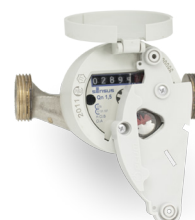


Fig. 4.2.

• MADDALENA



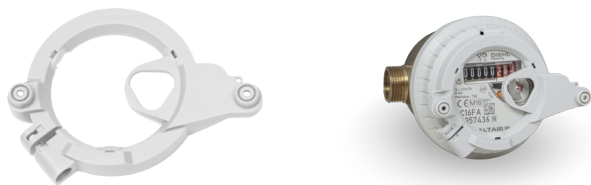
• SENSUS



• ZENNER



• DIEHL



INSTALLATION

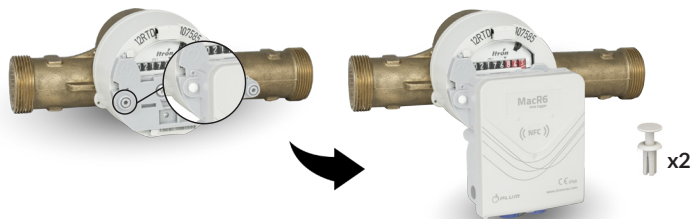


Fig. 4.3.

• 5 - Connection with MacR6 N

1. Turn on the NFC on smartphone or tablet.
2. Close the smartphone to the MacR6 N, application should start automatically.

There is no specific position for phone placement. It depends on location of NFC antenna inside the smartphone.



• 6 - Configuration parameters

1. Take off the smartphone from MacR6 N after finished readout.
2. Put in the watermeter data – pulse factor, counter value and serial number. Additionally put the PIN to the SIM card. By clicking „More parameters” you are able to set advanced values such as registration period, data server address, installation phone number (fig. 6.1. & 6.2.).

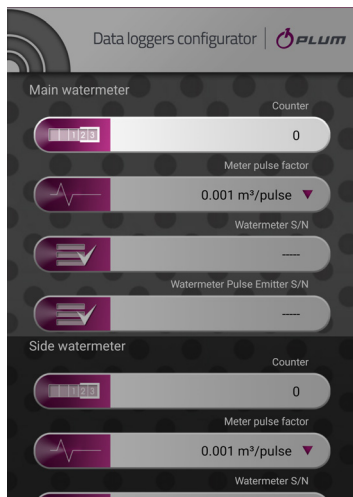


Fig. 6.1.

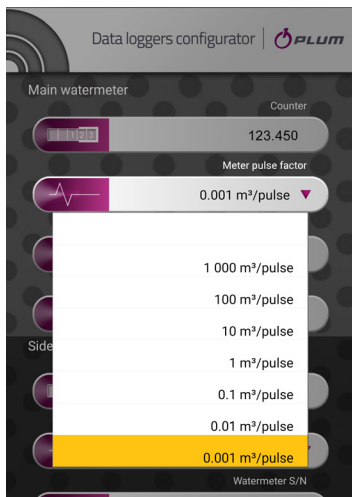
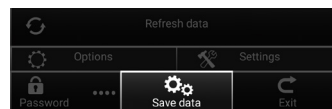
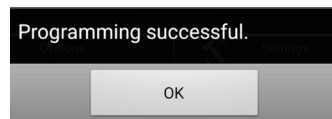


Fig. 6.2.

3. Save the configuration using Save data button as presented below.



4. Successful saving will be signed by the message below.



Now the callibration process will begin. It is needed to have the water flow during this process.

When callibration is successful, MacR6 N will send a SMS with installation summary on the phone number set in 6.2 if it was programmed.



If the callibration is unsuccessful, please repeat steps from 6 - Configuration parameters

DEVICE IS CONFIGURED AND READY TO USE

• 7 - eWebtel.com

1. Choose the GSM TEST option, and then choose DP and ZD sending.
2. Close the smartphone to the MacR6 N and wait for confirmation.

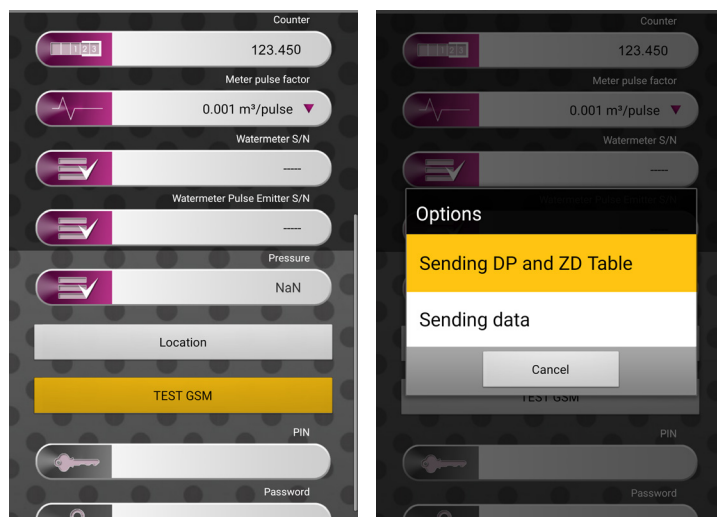


Fig. 7.1.

PLUM Sp. z o.o.

Wspólna 19, Ignatki, 16-001 Kleosin, Poland

Technical Department

tel.: 85 749 70 08, fax.: 85 749 70 14, e-mail: serwis@plum.pl